



27 Millmead, Sutton Road, Shrewsbury, SY2 6DR
£750 Per Month



27 Millmead, Sutton Road, Shrewsbury, SY2 6DR

£750 Per Month

VIRTUAL TOUR AVAILABLE: Refurbished and spacious one bedroom ground floor flat with private entrance in a converted Edwardian School building situated in a quiet residential area a short distance from Shrewsbury town centre. Includes parking space and access to professionally maintained communal garden.

Available: 02/03/26

Description

Comprising: Entrance hall, large living room, inner hall, double bedroom, modern kitchen including oven, hob and under counter fridge, large store cupboard, modern shower room. Communal utility room with professional grade laundry equipment. Professionally maintained communal gardens, gas central heating, double glazing. Parking space. EPC C



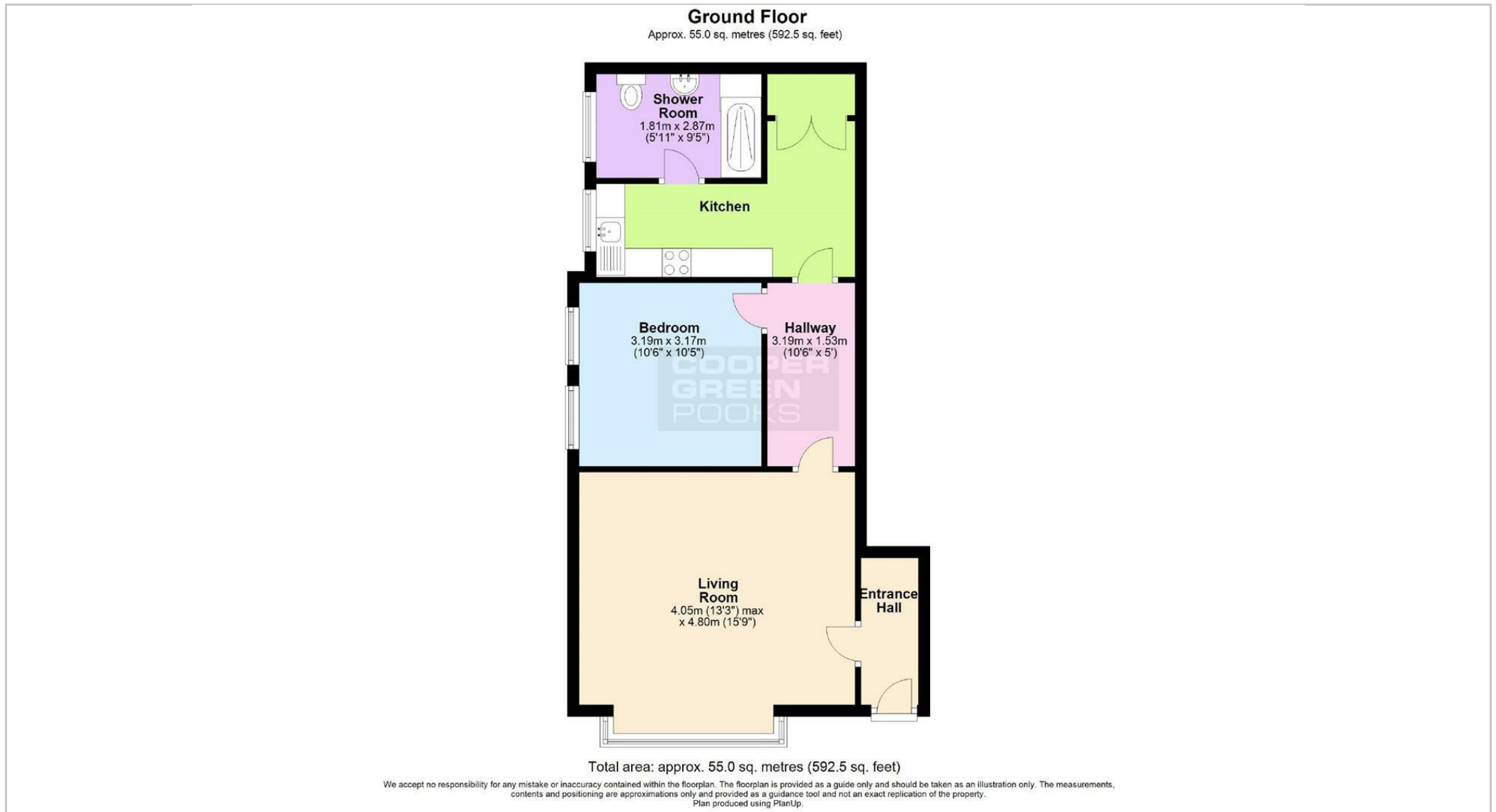
Unfurnished

Council Tax Band: A

Available: 2nd March 2026

EPC: C

Floor Plans



These particulars, whilst believed to be accurate are set out as a general outline only for guidance and do not constitute any part of an offer or contract. Intending purchasers should not rely on them as statements of representation of fact, but must satisfy themselves by inspection or otherwise as to their accuracy. No person in this firm's employment has the authority to make or give any representation or warranty in respect of the property.